

Mario Castelnuovo-Tedesco

TARANTELLA (1936)

PER CHITARRA

Revisione e diteggiatura di ANDRÈS SEGOVIA

Vivace

ff

f **p** **m**

mf **p**

C. III **p**

mp **M.C. III**

③ ③ ④ ③

C. II M.C. VIII

Handwritten musical score for C. II and M.C. VIII. The notation is on a single staff with a treble clef. It features a series of eighth and sixteenth notes, some beamed together. Fingering numbers (1-4) are written above the notes. Dynamics include *f* (forte), *mp* (mezzo-piano), and *mf* (mezzo-forte). A circled number 4 appears at the end of the line.

C. VII

Handwritten musical score for C. VII. The notation is on a single staff with a treble clef. It features a series of eighth and sixteenth notes, some beamed together. Fingering numbers (1-5) are written above the notes. Dynamics include *f* (forte) and *mf* (mezzo-forte). A circled number 5 appears at the end of the line.

C. V

Handwritten musical score for C. V. The notation is on a single staff with a treble clef. It features a series of eighth and sixteenth notes, some beamed together. Fingering numbers (1-3) are written above the notes. Dynamics include *f* (forte). The tempo marking *a tempo* is present. A circled number 3 appears at the end of the line.

C. IV C. V

Handwritten musical score for C. IV and C. V. The notation is on a single staff with a treble clef. It features a series of eighth and sixteenth notes, some beamed together. Fingering numbers (1-3) are written above the notes. Dynamics include *p* (piano). The tempo marking *a tempo* is present. A circled number 3 appears at the end of the line.

C. VI

Handwritten musical score for C. VI. The notation is on a single staff with a treble clef. It features a series of eighth and sixteenth notes, some beamed together. Fingering numbers (1-4) are written above the notes. Dynamics include *f* (forte) and *mf* (mezzo-forte). A circled number 4 appears at the end of the line.

Handwritten musical score for C. VI. The notation is on a single staff with a treble clef. It features a series of eighth and sixteenth notes, some beamed together. Fingering numbers (1-5) are written above the notes. Dynamics include *mp* (mezzo-piano) and *p* (piano). A circled number 5 appears at the end of the line.

C.II ④ C.V ⑤

mf in rilievo, con spirito

C.II ④ C.II ④

C.II ④ C.II ④

mf

C.II ④ C.II ④

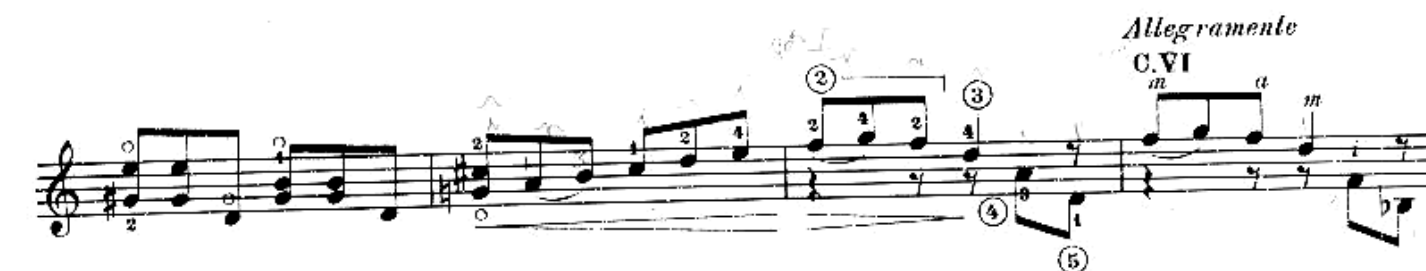
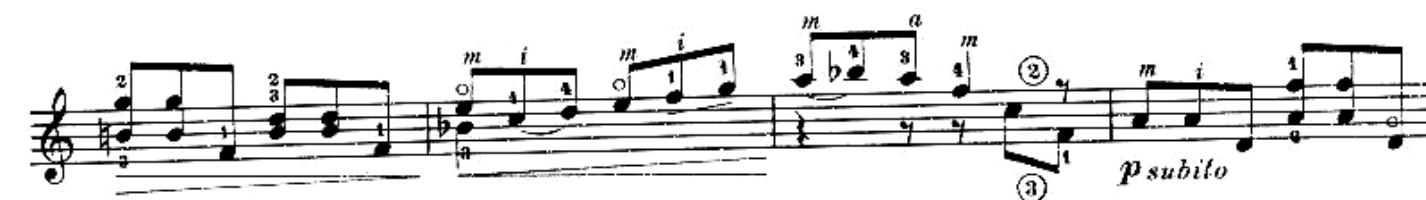
p con spirito

C.II ④ C.II ④

p

C.II ④ C.II ④

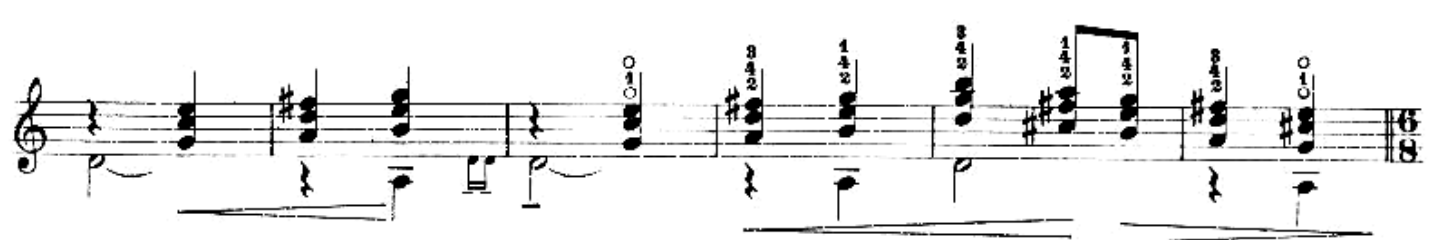
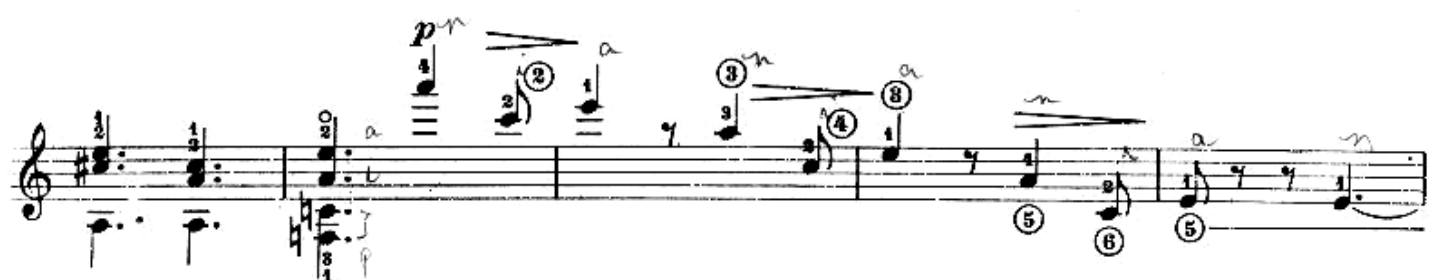
ff



A musical score for the song 'The Rose Tree'. The score is written on a single staff in treble clef. It begins with a key signature of one sharp (F#) and a time signature of 6/8. The melody is written in a simple, folk-like style. The score includes two measures of music, followed by a double bar line. After the double bar line, there are two measures of music, each with a measure rest. The first measure rest is labeled 'M.C. I' and the second is labeled 'M.C. II'. The score ends with a double bar line. The tempo/mood is marked 'mp' (moderato piano) at the bottom right.

[illegible]

[illegible]



C. III
a tempo
mf con spirito

C. I

C. III

C. II

C. III

mp

p

The first staff of music is in 6/8 time and B-flat major. It begins with a treble clef and a key signature of one flat. The tempo is 'a tempo' and the dynamic is 'mf con spirito'. The staff contains several measures of music, including a triplet of eighth notes and a measure with a fermata. Above the staff, there are markings for 'C. III', 'C. I', 'C. III', 'C. II', and 'C. III'. Below the staff, there are markings for 'mf con spirito', 'mp', and 'p'. There are also some handwritten notes and symbols, including a circled '4' and a circled '0'.

f

The second staff of music continues the piece. It features a series of eighth notes and a measure with a fermata. The dynamic is 'f'. There are some handwritten notes and symbols, including a circled '2'.

The third staff of music continues the piece. It features a series of eighth notes and a measure with a fermata. The dynamic is 'p'. There are some handwritten notes and symbols, including a circled '0'.

The fourth staff of music continues the piece. It features a series of eighth notes and a measure with a fermata. The dynamic is 'p'. There are some handwritten notes and symbols, including a circled '8'.

The fifth staff of music continues the piece. It features a series of eighth notes and a measure with a fermata. The dynamic is 'p'. There are some handwritten notes and symbols, including a circled '7'.

The sixth staff of music continues the piece. It features a series of eighth notes and a measure with a fermata. The dynamic is 'p'. There are some handwritten notes and symbols, including a circled '2'.

The seventh staff of music continues the piece. It features a series of eighth notes and a measure with a fermata. The dynamic is 'p'. There are some handwritten notes and symbols, including a circled '3' and a circled '2'.

ff molto marcato

